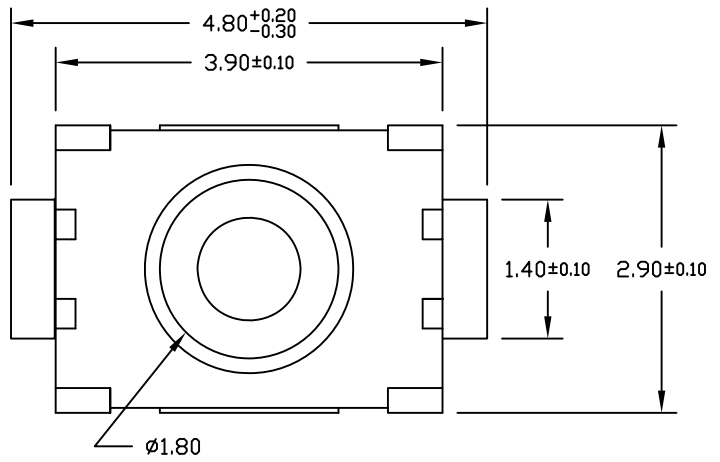
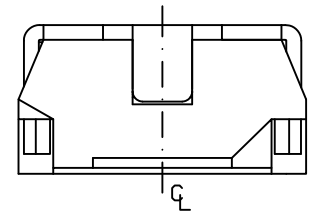
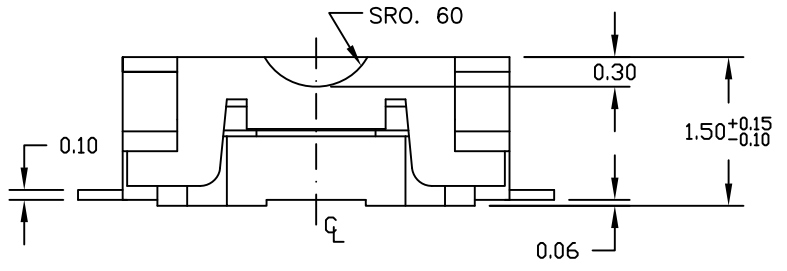
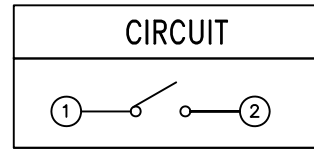
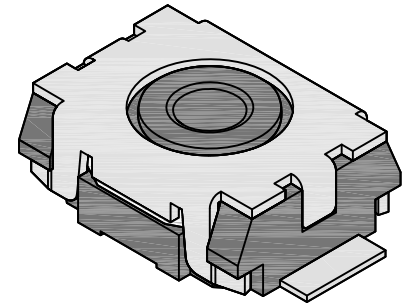


REV.	LOCAS.	DESCRIPTION	DATE	DRAWN
A	NEW		29.09.2009	Ronny



**ORDER CODE**  
**TSM-102-L1C/1SZ**

Packing  
Reel = C



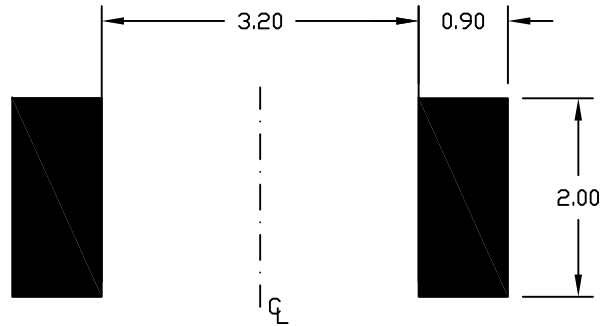
**Specifications**

- Current rating: 50mA 12V DC
- Insulation resistance: 100MΩ min.
- Dielectric withstanding: 100V AC
- Contact resistance: 100mΩ max.
- Capacitance: 5pf max.; 1MHz ±10kHz

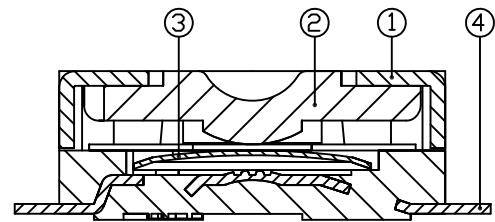
**Materials**

1. Cover: Stainless Steel
2. Stem: LCP
3. Contact: Stainless Steel, Silver plated
4. Solder Terminal: PhBz, Silver plated

- Operating temperature: -20°C to +70°C
- Storage temperature: -30°C ~ +80°C
- Solder temperature: +260°C 5sec. max.
- Operating Life: 100.000 cycles min.



RECOMMENDED PCB LAYOUT



UNIT	mm	GENERAL TOLERANCE		DRAWN	DATE	DWG. NO.	SHEET 1/1
SCALE	Free	X.° ±	X. ±	Ronny	29.09.2009	TSM-L1C/1SZ	REV. A
		.XX° ±	.X ±	Ronny	29.09.2009	SERIES NO.	
		.XX° ±	.XX ± 0.20	Hogl	29.09.2009	TSM-102-Xxx/1SZ	

**TACTILE SWITCH**  
**"SMT" Type**  
**low Actuator 1.50mm**