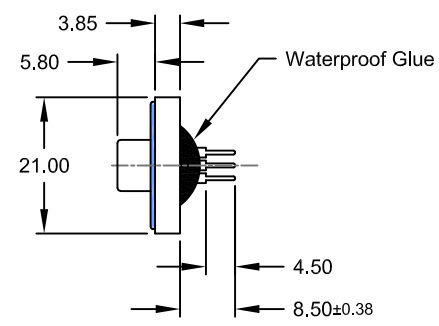
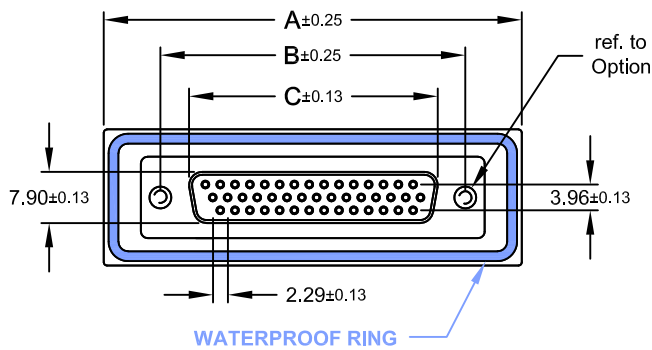
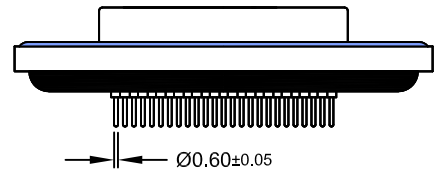


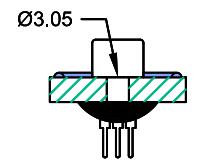
| REV. | DESCRIPTION | DATE | DRAWN |
|------|------------------------|------------|-------|
| A | New | 10.11.2006 | RH |
| B | frame | 23.07.2008 | Ronny |
| C | correct No. of contact | 20.04.2011 | Ronny |
| D | general update | 09.08.2019 | Ronny |



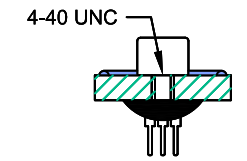
Order Code
SHF-xxx-SIP11-55/TX



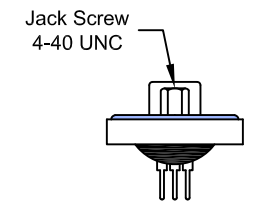
| Dimension mm | | | | | No. of Contact |
|--------------|-------|-------|-------|-------|----------------|
| A | B | C | D | E | |
| 39,40 | 24,99 | 16,33 | 20,00 | 28,20 | 015 |
| 47,70 | 33,30 | 24,66 | 28,00 | 36,50 | 026 |
| 64,50 | 47,04 | 38,38 | 41,50 | 51,00 | 044 |



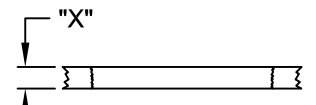
Option: **T0**



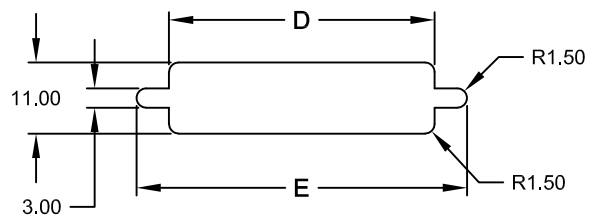
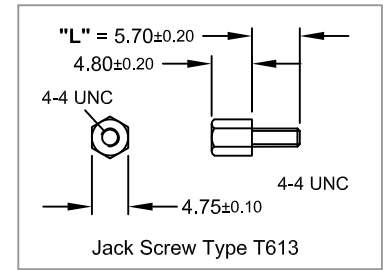
Option: **T**



Option: **TJ**
(Jack Screws mounted)



Panel Thickness "X" between 1.20~2.00mm for Screw "L" = 5.70



Recommended Panel CUT-OUT

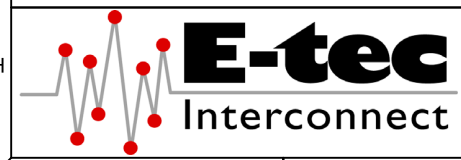
Specifications

Electrical
Current rating: 5A
Insulation resistance: 5000MΩ min.
Contact resistance: 10mΩ max.
Withstanding voltage: 1000V AC rms

Material
Contact: Brass
Plating: Au flash over Ni
Insulator: PBT UL 94V-0
Shell: Steel
Plating: Ni
Operating temperature: -55°C to +85°C

Salt Spray: 48 Hours
Waterproof Rate: IP 67 min.

E-tec 2019 © - all rights reserved www.e-tec.asia

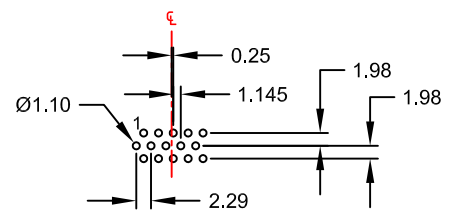


| UNIT | mm | GENERAL TOLERANCE | | DRAWN | DATE | DWG. NO. | SHEET 1/2 |
|-------|------|-------------------|------------|-------|------------|---------------------|-----------|
| SCALE | Free | X.° ± | X. ± | RH | 10.11.2006 | SHF-SIP11/T | REV. D |
| | | .X° ± | .X ± | Ronny | 09.08.2019 | SERIES NO. | |
| | | .XX° ± | .XX ± 0.25 | Fagi | 09.08.2019 | SHF-xxx-SIP11-xx/TX | |
| | | .XXX° ± | .XXX ± | | | | |

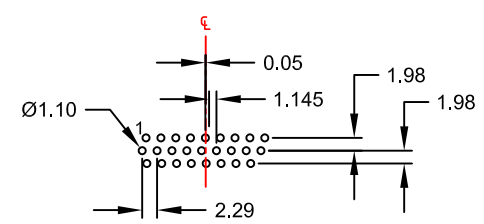
Waterproof D-Sub
High Density "Female"
Straight Solder Tail Type

| REV. | DESCRIPTION | DATE | DRAWN |
|------|----------------|------------|-------|
| A | New | 10.11.2006 | RH |
| B | frame | 24.07.2008 | Ronny |
| C | general update | 09.08.2019 | Ronny |

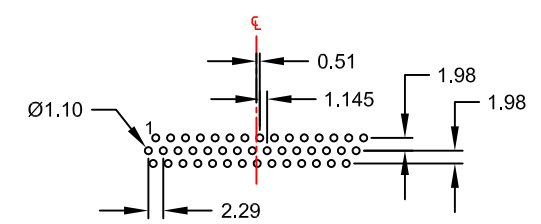
RECOMMENDED PCB HOLE LAYOUT "FEMALE"



15-contact



26-contact



44-contact

Layout Top View
(Tolerance ±0.05)

E-tec 2019 © - all rights reserved www.e-tec.asia



| | | | | | | |
|------------|-------------------|--------|-------------|--------------------|-------------------------|-----------|
| UNIT mm | GENERAL TOLERANCE | | DRAWN RH | DATE 10.11.2006 | DWG. NO. SHF-SIP11/T | SHEET 2/2 |
| | X.° ± | X. ± | | | | |
| | SCALE Free | .X° ± | .X ± | APPROVE Fagi | DATE 09.08.2019 | |
| | | .XX° ± | .XX ± 0.25 | | | |
| | .XXX° ± | .XXX ± | | | | |

PCB Hole Layout for
Waterproof D-Sub
High Density "Female"
Straight Soldertail Type