

Ordering Code

SDF - xxx - N 901 - 55/ XxXX

No. of contacts

Option

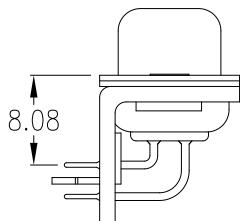
Precision contact

Plating: -55 = Plating gold all over

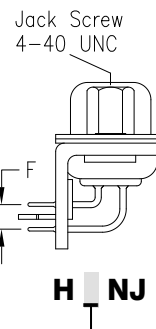
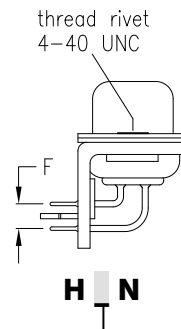
General Specification page 72

No. of contacts	Dimension		
	A	B	C
009	30.81	24.99	16.33
	1.213	.984	.643
015	39.14	33.32	24.66
	1.541	1.312	.971
025	53.04	47.04	38.38
	2.088	1.852	1.511
037	69.32	63.50	54.84
	2.729	2.500	2.159

Dimension "E"

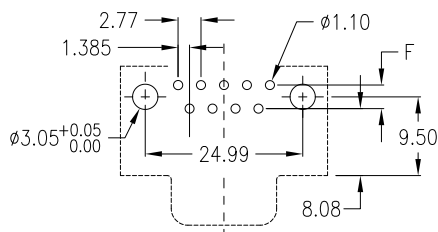


Options

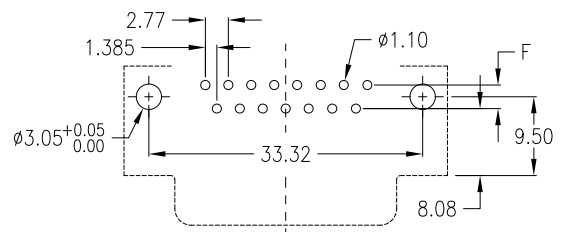


Dimension "F"	Option
2,54mm	1
2,84mm	2

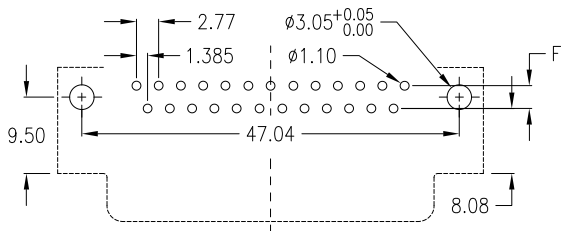
PCB Layout „female“



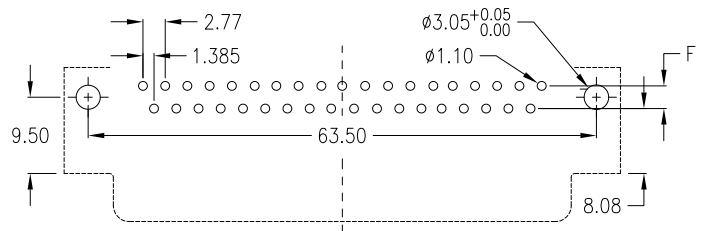
9 pin



15 pin



25 pin



37 pin